

Newsletter - Turihau Angus

No. 17 ~ AUTUMN 2013

Angela & Hamish Williams

RD3 Gisborne

Phone: 64-6-868 8421

Fax: 64-6-868 4049

Mobile: 0274 463 307

Email: turihau@gisborne.net.nz

Website: www.turihau.co.nz

Paul Williams Phone: 64-6-868 6709

Turihau has been breeding Angus Cattle for over 100 years and one of its main selection criteria has always been phenotype. This has never changed. The other selection tools we now have available to us is a multitude of EBV figures for specific traits; the main ones being Calving Ease, Maternal, Fertility, Growth and Carcase Traits and DNA profiling for genetic gain. We are very mindful of the importance of these tools but believe they are a reflection of the genetic potential of any given animal and therefore should never be used without considering the phenotype and general structure of any animal.

East Coast Angus Bull Walk

Wednesday 1 May – Thursday 2 May.
A selection of sale bulls will be on display on the Thursday morning.
Do join us.

Staff Update

The Manager, Tony Krawczyk and his family left us in October and our eldest son Toby and his wife Amelia and their two boys, Tristin and Jackson returned home from Masterton in January. Toby is managing the Commercial side of the property while Paul continues to oversee and manage the Stud. Paul and Sarah have just married and are enjoying a much earned break away for a few weeks. Our junior shepherd, Emma Pollitt has been chosen to represent NZ Angus Youth in one of the three teams that will be competing at the World Angus Forum Youth Challenge in October. Congratulations Emma.

TurihauANGUS

Breeding Excellence since 1906



2012 Bull Sale - Results

We sold just over 100 bulls at auction in 2012, made up of 72, 2 year bulls in June and 30 yearlings in September.

Both sales achieved very pleasing results. 7 sold for stud purposes. Sale averages were \$8743 for the June sale and \$4293 for the Yearling Sale.

Turihau Crumble sons were again in strong demand with 14 of his sons averaging \$14000.00
Sires by Trojan, Bullion and Waiterenui Theo sold well.



Tangihau Regal 117

We purchased this sire from Tangihau Stud for \$41,000.00. He is developing into an impressive young sire, achieving 100%, incalf cows in his first season.

Turihau Foremen is producing sons who are thick set and hold their condition well. His sons are particularly suited to our East Coast hill country.

WINNERS - Steak of Origin Challenge

We have hit the big Time! Twice! Producing the best steak to win Class 2 –Best of Breed British in 2012. Steaks from a Turihau heifer entered in the Wholesale and Foodservice Class 5 also topped the class, giving the Neat Meat Co. and AngusPure another plaque for the wall. We have been entering this Challenge since its inception 10 years ago, have been semi finalists 6 times and finalists twice. To take out this title is very rewarding and reinforces that we are breeding consistently good quality beef – delicious, succulent and tender.



Here we are receiving the Steak of Origin, Best of Brand–British Award 2012

Turihaua Dam Herd

The Stud Dam Herd is the most important asset we have and its depth of genetic potential of course goes back over 100 years of breeding.

Cow families can be traced back to the original cows purchased in the early 1900's.

Ones of most prominence include, Merry Maiden, Pride, Kathleen, Quetta and Eclupta families.

We cannot impress upon you enough of the importance of looking after your Dam Herd. They form the basis of your breeding programme.

Each year we continue to produce embryos from some of our top cows.

Proven dams Turihaua V256, V113 and X131 are being rested.

Three new dams have entered the programme this season. Turihaua U35, X283, Z28.



Turihaua Dam X119

Sire: Robin of Stern 708

Dam: Turihaua U225

DOB: 18/8/02



Turihaua Dam V256

Sire: Waimata Focus D128

Dam: Turihaua R121

DOB: 2/9/00



Turihaua Dam X131

Sire: Turihaua Campbell Q197

Dam: Turihaua R23

DOB: 11/8/02



Turihaua Dam V113

Sire: Turihaua Highway T16

Dam: Turihaua T5

DOB: 13/8/00

World Angus Forum Post Tour

This tour, following the Conference in Rotorua, is coming to the Gisborne, Hawkes Bay, Taupo regions.

We will be part of that Tour and will have a large selection of stock on hand for viewing.

The Forum Committee are running an international Youth Challenge that will include teams both preparing and showing stud heifers from NZ breeders. We will be taking 4 of our best heifers to Rotorua for this Competition. One heifer from each group will be chosen and then sold at an Auction during the Forum Conference... *More details soon.*

Weather Watch and Water

We know most of you have been affected severely by the drought this summer, on top of a very wet and trying winter. We have been lucky enough to have had a green drought with enough grass to even buy a few lambs. What has saved us has been the new reticulation system that we have been extending each year. Having fresh trough water in almost all paddocks has made grazing possible and the stock have made it through very well.



Nuts and Bolts Vet Comment – John Meban - Eastland Veterinary Services

In recent years the beef cow has come under criticism on a gross margin basis as being of lower profitability than other classes of stock. However this does not take into account the fact that for many months of the year cows are eating much poorer quality grass than other classes of stock. It is only in spring when this changes. Her role then is in controlling rapidly growing grass that would otherwise go to waste. If this spring flush is not kept under control pasture quality will fall for all other stock on farm over this period and into summer. It is this period from 3 weeks before calving right through to the end of mating that cows are most sensitive to under nutrition. Below requirement feeding, at this critical time, limits a cow's lactation and rebreeding chances. Weaning weights are down and more dry cows are seen at scanning in the

autumn. This is especially true for younger cows in their first and second pregnancies. Spring is the opportune time to recapture live weight lost in the autumn and winter when cows have been on clean up duty. Cows need to be in a CS of 3 to 3.5/5 at calving to fully maximise their chances of being a truly productive and complimentary asset on farm. High producing cows are well feed cows at the appropriate time of the production cycle. Unfortunately recent drought is going to make this a tough winter for many cows and compromise future production if not fed well. The breeding cow is an asset of hill country farms and needs to be treated with respect at the right times to maximise her contribution that no other class of stock can fulfil with the same profitability.



World Angus Forum Update

We have signed up as a Silver Sponsor for the World Angus Forum in October.

This will give us a lot of exposure leading up to and during the Conference in Rotorua and the Forum in general.

Dates

Pre Tour South Island

Sat 6 October – Sat 12 October

Forum Conference

Sun 13 October – Wed 16 October

Post Tour North Island

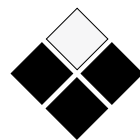
Thurs 17 October – Mon 21 October

Why not join us!

Register for any of the above on the World Angus Forum website www.worldangus.com or call the Forum organisers, ForumPoint2. ph. **07 8381098**

Join their facebook page and keep up to date with developments leading up to the Forum.

Farm Fresh Beef and Lamb



The Gisborne Deli & Butchery

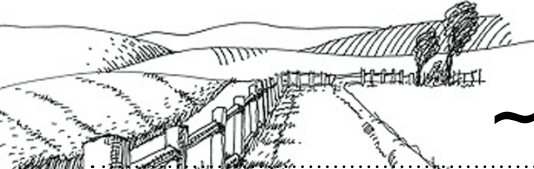
Farm fresh Turihaua Beef and Lamb cuts and small-goods are available Monday-Saturday from the Deli and the Farmers Market on Saturdays.

Both the beef and lamb are nicely aged to give that succulent tender flavour every time.

The Gisborne Deli Catering

Darryn and his team cater for all occasions from small intimate parties to corporate functions and everything in-between. Darryns food is always deliciously fresh and very tasty. If you require a caterer Darryn is the best. His number is 06 8677077.





~Pasture to Plate~



Braised Turihau Beef Hot Pot

Darryn Clyne, The Gisborne Deli/Butcher

1.5 kg piece of Topside, Thick Flank, rolled Brisket or Blade Roast
Bacon Lardons
1 cup seasoned flour
2 Tbsp Oil for sauté
Mirepoix (equal amounts of diced celery, carrot, onion approx 1 cup of each)
2 Tbsp chopped garlic
1 cup Red Wine (to deglaze the pan)
1lt Beef Stock
2 Tbsp Tomato Paste
Bay Leaf, Parsley stalks, Thyme (bouquet garnie)
Salt and Pepper

In the cooking pot, heat oil and sweat Mirepoix till translucent
Heat oil in thick bottomed fry pan,
Pierce the beef piece and insert lardons
pass beef thru the seasoned flour and brown all the edges of the pieces
remove beef to oven dish , with the mirepoix.
Add red wine to deglaze the fry pan, reduce by a 1/3 then add to beef dish
Add Stock to 1/2 way up side of beef, tomato paste, herbs and seasoning. Cover with tight fitting lid and put in oven for approx. 3 1/2 hours or until tender, @ 180degrees C (a fork should pierce the beef with ease!)
Thicken sauce, by either using cornflour, a roux, or by blending sauce in blender.

Adjust the seasoning and serve.

Beef or lamb Thai Summer Salad

Angela Williams

500g lamb back straps or 500g beef fillet
5cm piece of root ginger
1/4 cup soya sauce
1/4 cup brown sugar
1/4 cup grape seed oil or similar
1-2 cloves garlic

Method

Trim all silver off meat and place in a bowl.
Crush garlic and finely grate ginger
Combine with other marinade ingredients and pour over the meat
Leave to marinade for at least an hour at room temperature, or overnight in the fridge.
Cook on barbecue rare/medium rare then rest for 5-10 minutes.

Thai Dressing

1/2 cup each of basil, coriander and mint
3 tablsn sweet chilli sauce
Juice of two lemons or limes
2 tablsn soya sauce
1/3 cup fish sauce
3/4 cup grape seed oil or similar

Method

Place all ingredients in food processor and process until well combined



Vegetables/noodles

2 packets 2 minute noodles
4 cups fresh vegetables cut into small pieces. Any vegetables can be used (beans, carrots, broccoli, peppers asparagus, spring onions or whatever is in season.

Method

Cook noodles in boiling water 2-3 minutes. Refresh in cold water.
Blanch vegetables. Refresh in cold water. Drain

To assemble

Place noodles on a large platter. Add vegetables. Pour over Thai dressing.
Slice the meat and add to salad.
Sprinkle with spring onions,
Serve in bowls.

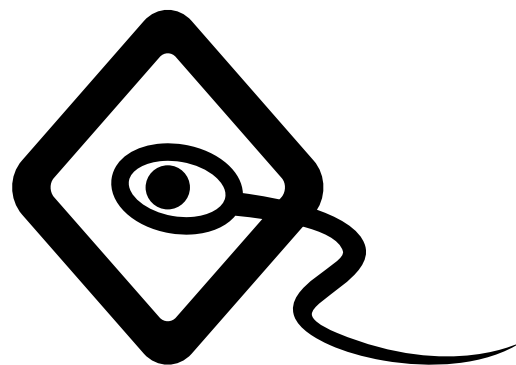
This is a favourite summer salad that's so easy to throw together and looks impressive served on a large platter. Double or triple the recipe if you have many mouths to feed.

World Forum Special

“Designer Embryos.” and Semen Packages

We are offering packages of Turihaua semen and the opportunity to design your own Embryo Packages using our unique genetics.

You choose the cow and the bull combination and we will organise the packages for you; or we will offer combinations for you to choose from. More information on this soon.



2013 June Bull Sale preview

Turihaua Rex is an exceptional bull, with a moderate frame and packed full of meat. He has excellent structure, very good feet and legs and is consistently leaving progeny of a very correct phenotype.

He is entered in the Australian Angus Benchmark Programme and semen has been sold to Argentina and Canada.

Look out for his sons at both the June and September Yearling sales. There are several Turihaua Foreman sons who we know will thrive on typical East Coast hill country.

Outcross sires, Waimata Focus and Oakview Tobit offer a group of very sound bulls.



Exciting new sire potential. Turihaua Rex E297



Turihaua Universal D117

Turihaua Universal D117

This son of Te Mania Unlimited has developed into an impressive sire. His progeny show all of Unlimited qualities. Progeny are of good phenotype and have kept their condition well through the dry summer.

Irelands Galaxy G43 - New Herd Sire

Turihaua has purchased the NZ Semen Rights to this Australian Sire. Galaxy was bred by Cory Ireland, Irelands Angus, Wagga Wagga and sold for a record price of \$117,500 to Sam Trovatello, Adameluca Stud. Paul flew to WaggaWagga to check him out before the deal was done.

He liked what he saw and felt he would be a great outcross in our herd. EBVs are outstanding with a moderate birth weight and great growth to 600 days. Its his EMA of 5.6 which is impressive and should generally improve our carcass EBVs.



Exciting new sire potential. Irelands Galaxy G43

TurihauaANGUS
Simply the best



2013 JUNE SALE

Tuesday 25 June - 3pm

2013 YEARLING SALE

Wednesday 25 September - 1.00pm

www.turihaua.co.nz

The progression of Turihaua Genetics continues with... **Rex E297**



HINGAIA 121
Sire: TURIHAUA TEXAN B141 (ET)
 TURIHAUA P43
Animal: TURIHAUA REX E297
 TURIHAUA BRODY Z277
Dam: TURIHAUA B48
 TURIHAUA Z48

- Entered in Angus Sire Benchmark Programme Australia
- Semen sold to Canada (www.altacustom.com) and Argentina
- Traditional NZ bloodlines

- Moderate frame, packed full of meat
- Exceptional feet and leg structure
- Heifer mating specialist

March 2013 Angus BREEDPLAN EBVs

	Calving Ease DIR	Calving Ease DTRS	Gestation Length	Birth Wt.	200 Day Wt	400 Day Wt	600 Day Wt	Mat Cow Wt	Milk	Scrotal Size	Carcase Wt	Eye Muscle Area	Rib	Rump	Retail Beef Yield	IMF
EBV	+1.3	+0.4	-3.6	+5.1	+30	+62	+86	+93	+10	+1.5	+37	+2.0	+0.7	+0.4	+0.1	-0.2

A selection of in-calf 18 month daughters



G111



G130



G193

A selection of sons



G302



G158



G274

Selling up to 90 2yr bulls – Tuesday 25th June 3:00pm

Selling 30 yearling bulls – Wednesday 25th September 1:00pm

Supporting World Angus Forum October 2013

Visit us on the WAF Post Tour 17-19 October



TurihauaANGUS 
 Breeding Excellence since 1906

www.turihaua.co.nz

Hamish & Angela Williams

RD3 Gisborne, New Zealand

Telephone: 64 6 868 8421 Email: turihaua@gisborne.net.nz

Paul Williams

RD3 Gisborne, New Zealand

Telephone: 64 6 868 6709